

EJ-MLG-LARGE

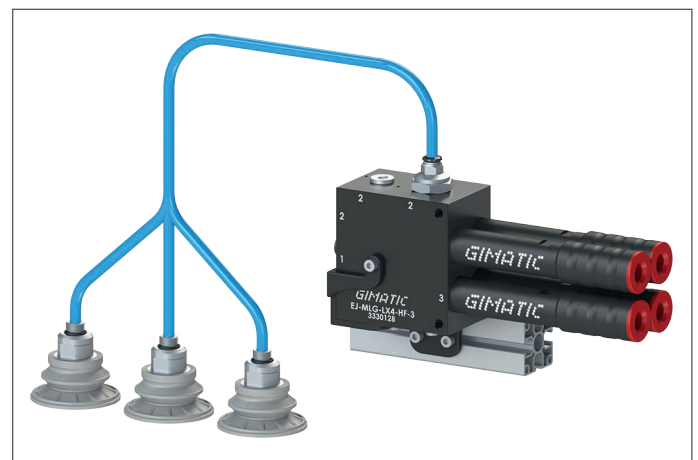
- Ideal for centralized applications
- Low weight, POM body
- G3/4" vacuum port
- Integrated silencer
- Low noise and short cycle time
- Multiple vacuum connections
- Short evacuation time
- Prearranged with VACSW-3N203-G (PNP) and VACSW-3M203-G (NPN) vacuum switches
- Available with two- and three-stage EJ-LARGE cartridge (EJ-HF and EJ-HV)

Typical applications

- Graphic sector, offset machines, pre- and post-press
- Liquid filling and emptying applications
- Handling of objects with high weights or uneven surfaces



Application example



Technical features

Max feed pressure	0.7 MPa
Weight	514 ± 1017 g
Material	PA, SS, POM, Nitrile (NBR)
Noise level	70 ± 75 dB

Suction flow rate

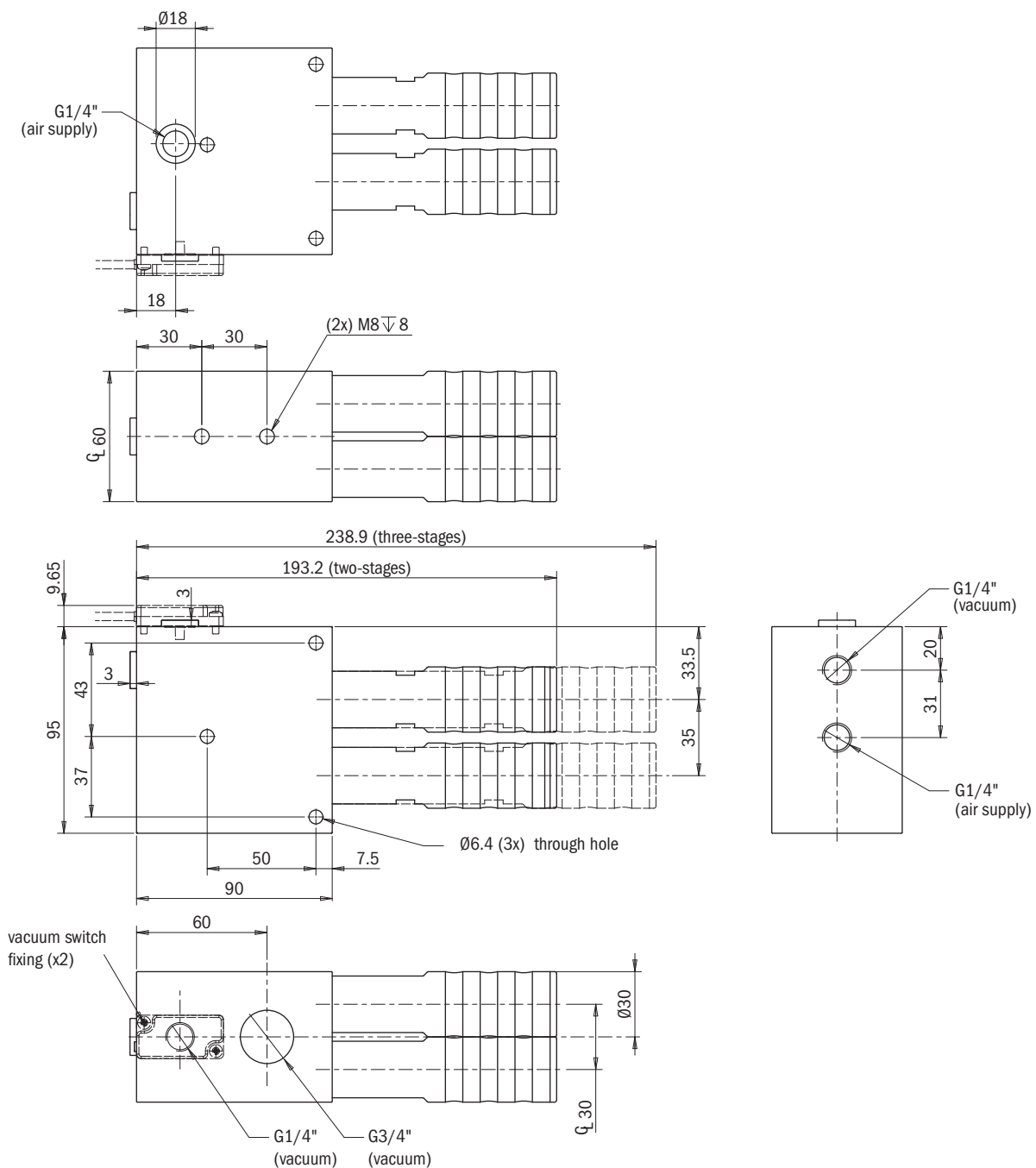
Model	Feed pressure [MPa]	Air consumption [l/s]	Suction flow rate [l/s] at different vacuum levels [kPa]											Max vacuum [kPa]
			0	-10	-20	-30	-40	-50	-60	-70	-80	-90		
EJ-MLG-LX2-HF-2	0.6	3.4	6.2	6.0	5.0	3.4	1.78	1.24	1.02	0.62	–	–	-73	
EJ-MLG-LX2-HF-3	0.6	3.4	11.8	7.0	5.0	3.4	1.78	1.24	1.02	0.62	–	–	-73	
EJ-MLG-LX2-HV-2	0.5	3.86	5.2	4.8	3.4	2.6	1.4	1.1	0.8	0.62	0.3	0.04	-94	
EJ-MLG-LX2-HV-3	0.5	3.86	12.0	7.4	4.2	3.8	1.58	1.1	0.8	0.62	0.3	0.04	-94	
EJ-MLG-LX3-HF-2	0.6	5.1	9.6	9.0	7.5	5.1	2.67	1.86	1.53	0.93	–	–	-73	
EJ-MLG-LX3-HF-3	0.6	5.1	17.7	10.5	7.5	5.1	2.67	1.86	1.53	0.93	–	–	-73	
EJ-MLG-LX3-HV-2	0.5	5.79	7.8	7.2	5.1	3.9	2.1	1.65	1.2	0.93	0.45	0.06	-94	
EJ-MLG-LX3-HV-3	0.5	5.79	18.0	11.1	6.3	5.7	2.37	1.65	1.2	0.93	0.45	0.06	-94	
EJ-MLG-LX4-HF-2	0.6	6.8	12.8	12.0	10.0	6.8	3.56	2.48	2.04	1.24	–	–	-73	
EJ-MLG-LX4-HF-3	0.6	6.8	23.6	14.0	10.0	6.8	3.56	2.48	2.04	1.24	–	–	-73	
EJ-MLG-LX4-HV-2	0.5	7.72	10.4	9.6	6.8	1.3	2.8	2.2	1.6	1.24	0.6	0.08	-94	
EJ-MLG-LX4-HV-3	0.5	7.72	24.0	14.8	8.4	7.6	3.16	2.2	1.6	1.24	0.6	0.08	-94	

For technical specifications, regarding the suction flow rate and the air consumption at different pressures, please refer to the technical data sheets of the EJ-LARGE cartridges in the two- and three-stage versions

Evacuation time

Model	Feed pressure [MPa]	Air consumption [NI/s]	Evacuation time [s/l] to reach different vacuum levels [kPa]									Max vacuum [kPa]
			-10	-20	-30	-40	-50	-60	-70	-80	-90	
EJ-MLG-LX2-HF-2	0.6	3.4	0.015	0.035	0.06	0.095	0.15	0.2	0.35	—	—	-73
EJ-MLG-LX2-HF-3	0.6	3.4	0.01	0.025	0.05	0.095	0.15	0.2	0.35	—	—	-73
EJ-MLG-LX2-HV-2	0.5	3.86	0.02	0.045	0.08	0.15	0.20	0.3	0.45	0.65	1.25	-94
EJ-MLG-LX2-HV-3	0.5	3.86	0.01	0.03	0.05	0.10	0.15	0.2	0.35	0.55	1.2	-94
EJ-MLG-LX3-HF-2	0.6	5.1	0.01	0.023	0.04	0.063	0.10	0.13	0.23	—	—	-73
EJ-MLG-LX3-HF-3	0.6	5.1	0.006	0.016	0.033	0.063	0.10	0.13	0.23	—	—	-73
EJ-MLG-LX3-HV-2	0.5	5.79	0.013	0.03	0.053	0.10	0.13	0.2	0.3	0.43	0.83	-94
EJ-MLG-LX3-HV-3	0.5	5.79	0.006	0.02	0.033	0.066	0.10	0.13	0.23	0.36	0.8	-94
EJ-MLG-LX4-HF-2	0.6	6.8	0.007	0.017	0.03	0.047	0.075	0.10	0.175	—	—	-73
EJ-MLG-LX4-HF-3	0.6	6.8	0.005	0.012	0.025	0.047	0.075	0.10	0.175	—	—	-73
EJ-MLG-LX4-HV-2	0.5	7.72	0.019	0.022	0.04	0.075	0.10	0.15	0.225	0.32	0.62	-94
EJ-MLG-LX4-HV-3	0.5	7.72	0.005	0.015	0.025	0.05	0.075	0.10	0.175	0.27	0.6	-94

For technical specifications regarding the evacuation time and the consumption at different pressures, please refer to the technical data sheets of the EJ-LARGE cartridges, in the two- and three-stage versions



Identification codes

Alphanumeric code	Description	Order code
EJ-MLG-LX2-HF-2	EJ-MLG-LARGE2-HF-2 vacuum pump with holder and integrated silencer	3330119
EJ-MLG-LX2-HF-3	EJ-MLG-LARGE2-HF-3 vacuum pump with holder and integrated silencer	3330120
EJ-MLG-LX2-HV-2	EJ-MLG-LARGE2-HV-2 vacuum pump with holder and integrated silencer	3330121
EJ-MLG-LX2-HV-3	EJ-MLG-LARGE2-HV-3 vacuum pump with holder and integrated silencer	3330122
EJ-MLG-LX3-HF-2	EJ-MLG-LARGE3-HF-2 vacuum pump with holder and integrated silencer	3330123
EJ-MLG-LX3-HF-3	EJ-MLG-LARGE3-HF-3 vacuum pump with holder and integrated silencer	3330124
EJ-MLG-LX3-HV-2	EJ-MLG-LARGE3-HV-2 vacuum pump with holder and integrated silencer	3330125
EJ-MLG-LX3-HV-3	EJ-MLG-LARGE3-HV-3 vacuum pump with holder and integrated silencer	3330126
EJ-MLG-LX4-HF-2	EJ-MLG-LARGE4-HF-2 vacuum pump with holder and integrated silencer	3330127
EJ-MLG-LX4-HF-3	EJ-MLG-LARGE4-HF-3 vacuum pump with holder and integrated silencer	3330128
EJ-MLG-LX4-HV-2	EJ-MLG-LARGE4-HV-2 vacuum pump with holder and integrated silencer	3330129
EJ-MLG-LX4-HV-3	EJ-MLG-LARGE4-HV-3 vacuum pump with holder and integrated silencer	3330130

For information on the VACSW-3N203-G (PNP) and VACSW-3M203-G (NPN) vacuum switches, see page 494

Introduction

Vacuum theory

Suction cups

Vacuum pumps

Vacuum gripping systems

Customised solutions

Suspensions

System accessories

